



Heart Midlands



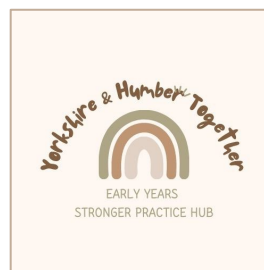
Kent Early Years



Northern Lights Early Years Hub
North East



Reachout Early Years
East of England Network



Yorkshire & Humber Together

29TH FEBRUARY 2024

Stronger Practice Hub Childminder Networks Showcase Event

Why

How

What

- Give Childminders access to the Evidence Store and support them to put informed approaches into their practice
- Develop networks to support Childminders promoting collaborative working, Childminders often feel isolated

Feedback

Blogs



Why

How

What

Feedback

Blogs

- Appointing Childminder partners in **5/5** hubs
- Working with Childminder Area Leads for Expert and Mentor Programme
- Gathering information
- Establishing networks
- Meeting with Childminders to discuss support network



EMMA D'SOUZA
CHILDMINDER,
ESSEX



STRONGER PRACTICE HUB
CHILDMINDER NETWORKS SHOWCASE EVENT

Heart – Midlands Stronger Practice Hub



Why

How

What

Feedback

Blogs

Heart Stronger Practice Hub Supporting Childminders

What we have done so far...



157
CHILDMINDERS
ENGAGED SO
FAR

91 CHILDMINDERS
ATTENDING



61 CHILDMINDERS
ATTENDING

Why

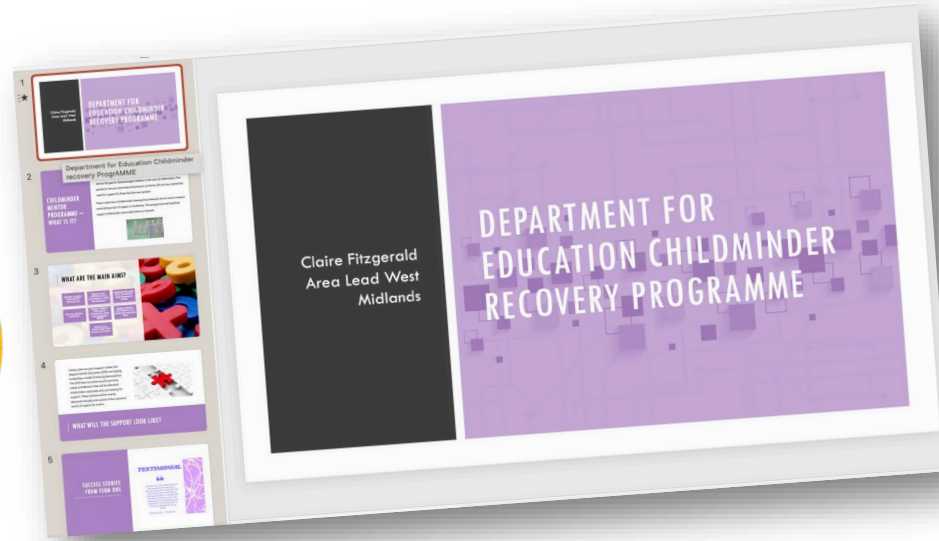
How

What

Feedback

Blogs

What we have done so far, continued...



AREA LEADS & MENTORS



TRAINING OPPORTUNITIES

SOCIAL MEDIA



Why

How

What

Feedback

Blogs

What we have done so far, continued...



CHILDMINDER LED STAY AND
PLAYS



EVERYDAY ACROSS
BIRMINGHAM

Why

How

What

Feedback

Blogs

What our Providers had to say...

"THE CHILDMINDER STAY AND PLAY GROUPS HAVE BEEN A VERY VALUABLE RESOURCE FOR US TO ACCESS, PROVIDING OPPORTUNITIES FOR CHILDREN AND CHILDMINDERS TO PLAY AND SOCIALISE IN A SAFE ENVIRONMENT.

IT ENABLES US TO MEET UP WITH OTHER CHILDMINDERS IN THE AREA TO CREATE A NETWORK TO SHARE IDEAS, DISCUSS CHANGES IN THE SECTOR, SHARE WORK OPPORTUNITIES AND ALSO TO GAIN SUPPORT AND KNOWLEDGE FROM FELLOW CHILDMINDERS.

THE CHILDREN GET TO BECOME PART OF A WIDER COMMUNITY, MIXING WITH A LARGER GROUP OF CHILDREN FROM DIFFERENT SETTINGS AND FORMING RELATIONSHIPS. IT HAS DEFINITELY MADE MY JOB A LITTLE EASIER AS SOMETIMES THIS JOB

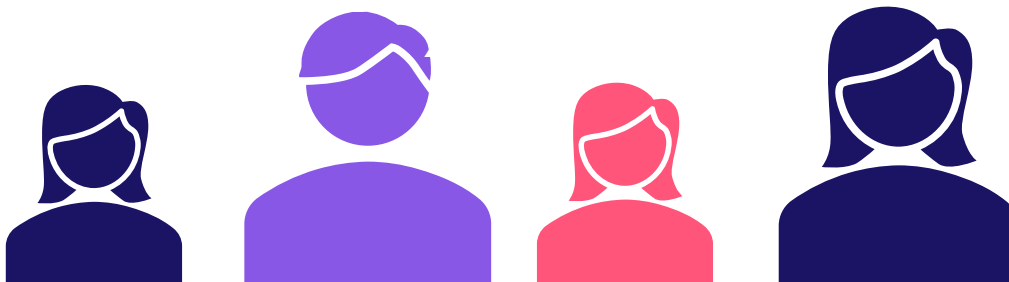
"I HAVE BECOME A REGULAR ATTENDEE OF THE CHILDMINDER 'STAY AND PLAY' GROUP. IT'S SO VALUABLE TO HAVE SOMEWHERE TO MEET OTHER CHILDMINDERS AND THEIR MINDEES, A PLACE WHERE INFORMATION, ADVICE AND EXPERIENCES BETWEEN CHILDMINDERS CAN BE EXCHANGED AND WHERE THE CHILDREN CAN MEET, PLAY AND MAKE MORE FRIENDS."

LOUISE

"I FEEL THAT THESE SESSIONS HAVE MADE A REALLY BIG IMPACT NOT ONLY WITH THE CHILDREN SOCIALISING IN LARGER NUMBERS BUT WITH MYSELF TOO.

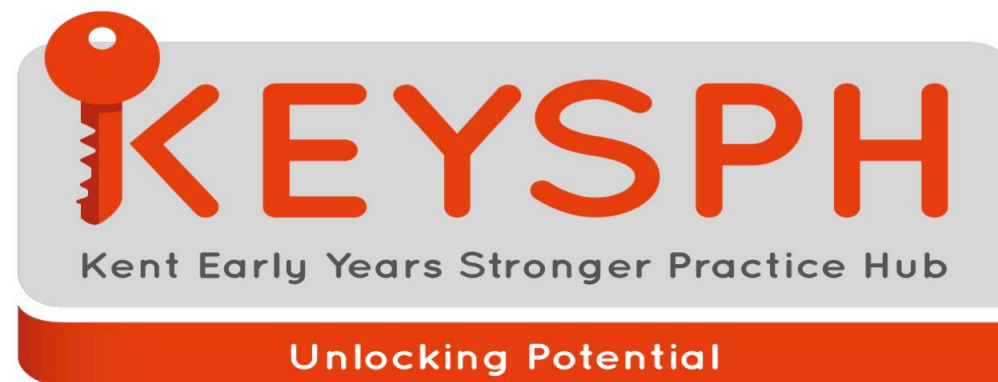
IT'S GIVEN ME THE OPPORTUNITY TO MIX WITH OTHER CHILDMINDERS AND DISCUSS AND SHARE BEST PRACTICES. I FEEL THAT THE SESSIONS HAVE BEEN VALUABLE AND LOOKING FORWARD TO SEE HOW IT DEVELOPS FURTHER."

MARIE



STRONGER PRACTICE HUB
CHILDMINDER NETWORKS SHOWCASE EVENT

Kent Early Years Stronger Practice Hub



Why

How

What

Feedback

Blogs

Kent Early Years Stronger Practice Hub

What we have done so far...

KENT EYSPH HAVE 826 CHILDMINDERS ON OUR MAILING LIST FROM KENT, EAST SUSSEX, SURREY, WEST SUSSEX, BRIGHTON AND HOVE, ISLE OF WIGHT & MEDWAY.

FOLLOWING OUR PROVIDER FEEDBACK AT OUR WELCOME WEBINARS WE TOOK *'YOU SAID, WE DID'* APPROACH:

- In June we delivered a webinar on 'Self Regulation' with **157** people, there were **15** childminders.
- We successfully delivered two webinars in October and November on 'supporting children with their speech and language' with a coaching and mentoring approach. Eight childminders attended.
- Our Mastery of Maths webinar was very successful with over **92** participants and over **37 further requests for the recorded webinar to date.**



Why

How

What

Feedback

Blogs

Our learning so far

- Recording all our webinars so childminders can watch it in their own time.
- Social media platforms such as Facebook and TikTok have been invaluable in engaging childminders with bitesize evidence based practice at times that suit them. In January we reached over **30K** people.
- Live webinars are delivered at **7pm** slots with priority for childminders.
- Working closely with Childminding Mentor Area Leads programme has been useful for us to learn from existing networks.

Next steps

- Develop networks through our Open Day Series, childminders visiting settings to share 'inspirational practice'. For example, Gem has an outdoor ethos as a childminder which she is willing to share.
- Build upon our existing frameworks in Kent to enhance good practice.
- Work towards making a difference to children's outcomes following provider feedback on our work.



Why

Our 'Let's Talk About' sessions focused on the impact on practice following our webinars

How

"I NOW KNOW THAT I
AM NOT ALONE IN SAYING
THAT
I FIND IT NOT ALWAYS EASY
TO SUPPORT CHILDREN WITH
THEIR SELF REGULATION"

"I FEEL BETTER IN KNOWING
THAT OTHER PEOPLE ARE
HAVING THE SAME ISSUES AS
ME"

"I FEEL MORE CONFIDENT
THAT I AM DOING THE RIGHT
THING ALTHOUGH IT IS
SOMETIMES TRIAL AND
ERROR"

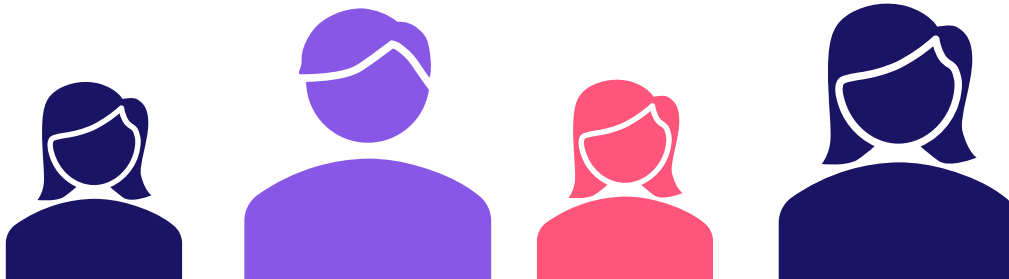
What

"THE MATHS WEBINAR WAS
A REAL EYE OPENER FOR
ME...
THANK YOU SO MUCH!"

"AS A CHILDMINDER, I FEEL
VALUED AND RESPECTED IN
THIS DISCUSSION"

Feedback

Blogs



STRONGER PRACTICE HUB
CHILDMINDER NETWORKS SHOWCASE EVENT

Northern Lights Early Years Hub North East



Northern Lights

EARLY YEARS HUB NORTH EAST

Why

How

What

Feedback

Blogs

Northern Lights Early Years Hub North East

What we have done so far...



Northern
Lights

EARLY YEARS HUB NORTH EAST



Why

How

What

Feedback

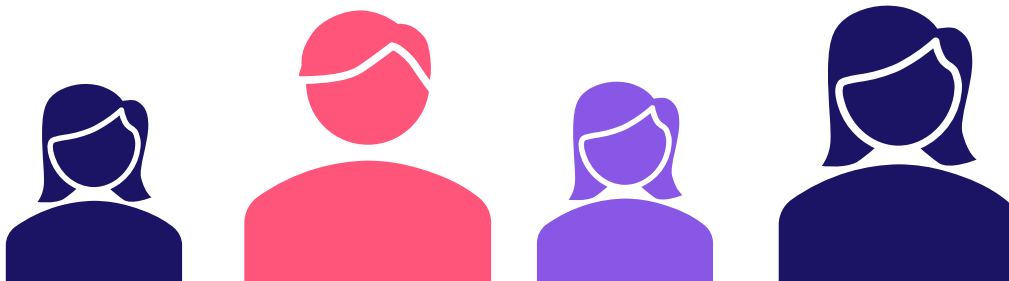
Blogs

Tiny Tweeties

"WE ABSOLUTELY LOVE THE FACT THAT TINY TWEETIES IS SUITABLE FOR THE UNDER 5'S AND THE CHILDREN GAIN SO MUCH FROM THE EXPERIENCE WHEN INVOLVED IN MUSIC.

MY KEY POINTS I TOOK AWAY REGARDING THE SESSION ARE THE COMMUNICATION AND LANGUAGE DEVELOPMENT OPPORTUNITIES THAT ARE ABSOLUTELY PARAMOUNT HERE, IT DIRECTLY IMPACTS ON THE CHILDREN THROUGH SONG AND MUSIC AS WELL AS DEVELOPING THEIR SOCIAL INTERACTION AND AWARENESS THAT SUPPORTS THEIR PSED IN GROUP SESSIONS.

I NOW KNOW WHERE TO ACCESS THIS EVIDENCE AND RESEARCH THAT WILL HELP ME TO LEARN MORE ABOUT THESE KEY AREAS OF CHILD



Why

How

What

Feedback

Blogs

Nature Pioneers

"I CAN ALREADY SEE THE IMPACT IT HAS MADE JUST OVER THE SESSIONS I HAVE ALREADY ATTENDED.

I REALLY CAN'T BELIEVE HOW MUCH THE CHILDREN HAVE ACTUALLY BEEN EXPOSED TO.

IT HAS MADE LIFE A LOT EASIER BEING ABLE TO USE THE TOOLS PROVIDED THROUGH THE SPH NETWORK SESSIONS TO RECALL KNOWLEDGE AND UNDERSTAND WORDS ABOUT THEIR NATURAL WORLD.

I COULDN'T BELIEVE HOW MANY AREAS OF LEARNING WERE INTERWOVEN DURING THE SESSION AND THE OPPORTUNITY TO HAVE HIGH QUALITY INTERACTIONS MODELLED TO US W

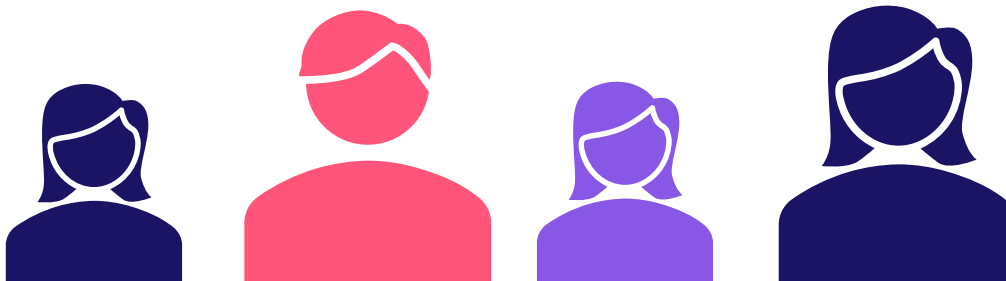
INSPIRING FOUNDATIONS



Mill Hill Nursery

Houghton Community
Nursery School

NATIONAL
CHILDREN'S
BUREAU



Why

How

What

Feedback

Blogs

Blogs

Because Development Really Does Matter!

[HTTPS://SWAY.CLOUD.MICROSOFT/LGPHYSM5FO53VGCI?REF=LINK](https://sway.cloud.microsoft/LGPHYSM5FO53VGCI?REF=LINK)



Learning as we grow – Allotment Life!

[HTTPS://SWAY.CLOUD.MICROSOFT/NPD4TGL4GWGW0HTY?REF=LINK](https://sway.cloud.microsoft/NPD4TGL4GWGW0HTY?REF=LINK)



STRONGER PRACTICE HUB
CHILDMINDER NETWORKS SHOWCASE EVENT

Reachout Early Years Stronger Practice Hub



Why

How

What

Feedback

Blogs



REACH^{OUT}
EARLY YEARS
STRONGER PRACTICE HUB
EAST OF ENGLAND

**CHILDMINDER
SUPPORT**

Reach ^{out} Early Years Stronger Practice Hub East of England

What we have achieved so far...

- ESTABLISHED **10** CHILDMINDER NETWORKS
- TAKEN ON A CHILDMINDER PARTNER
- COORDINATED AND DELIVERED CONTINUING PROFESSIONAL DEVELOPMENT SESSIONS
- PROVIDED HIGH QUALITY RESOURCES TO SUPPORT AND IMPROVE PRACTICE

Why

How

What

Feedback

Blogs



REACH^{OUT}
EARLY YEARS
STRONGER PRACTICE HUB
EAST OF ENGLAND

HOW REACH^{OUT}
ARE MAKING
A DIFFERENCE

What we have Achieved so far, continued...

- RESILIENCE TRACKER TRAINING: **80%** OF DELEGATES WERE CHILDMINDERS
- PROVIDED SUPPORTING MATERIALS WITH RESOURCES TO INTRODUCE EVIDENCE STORE TO CHILDMINDERS
- **53%** OF PROVIDERS IN OUR NETWORK ARE CHILDMINDERS. SO FAR WE'VE ENGAGED WITH OVER 200 CHILDMINDERS!
- TWILIGHT SALT WEBINARS TO SUIT CHILDMINDERS. RECORDED AND ADDED TO OUR YOUTUBE CHANNEL TO WATCH AT A CONVENIENT TIME

Why

How

What

Feedback

Blogs

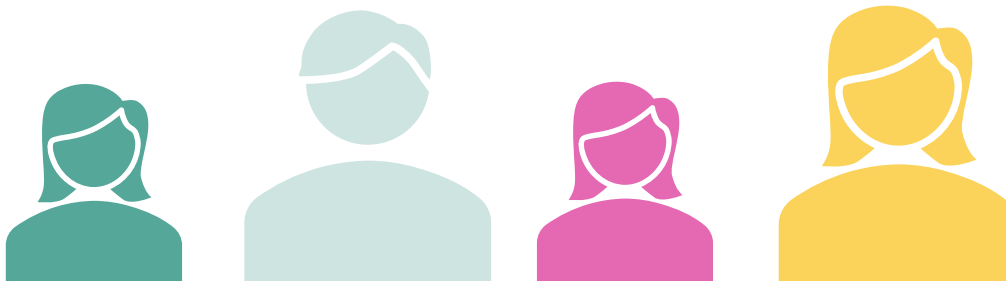
What our providers had to say...

"I HAVE FOUND IT SO VALUABLE BECAUSE AFTER COVID THE CONNECTION AND COMMUNITY FEEL AS CHILDMINDERS WAS LOST AND THE OPPORTUNITIES HAD BECOME LIMITED. THIS GROUP HAS MADE A REAL DIFFERENCE."

RESILIENCE TRACKER TRAINING:
"I CAN NEVER LEARN ENOUGH ABOUT BRAIN DEVELOPMENT, ADVERSE CHILDHOOD EXPERIENCES, TRAUMA AND THE EARLY YEARS. SUCH INTERESTING SUBJECTS AND THE MORE WE KNOW, THE BETTER WE ARE EQUIPPED TO SUPPORT OUR LITTLE PEOPLE. THIS COURSE HAS GIVEN ME SUCH A SIMPLE WAY TO LOOK DEEPER INTO CHILDREN'S RESILIENCE AND HOW WE CAN SUPPORT THEM AND PREPARE THEM THE BEST WE CAN FOR THE WORLD."

We asked:
'How useful do you find the network meetings?' 100% of our providers gave
10/10

"IT HAS BEEN INVALUABLE FOR INFORMATION AND KNOWING WHERE TO GO FOR SUPPORT."



STRONGER PRACTICE HUB
CHILDMINDER NETWORKS SHOWCASE EVENT

Yorkshire & Humber Together Early Years Stronger Practice Hub



Why

How

What

Feedback

Blogs

Yorkshire & Humber Together Stronger Practice Hub

What we have done so far...



- Loss of local networks creating isolation for childminders
- Covid recovery
- Encouraging a love of books to support children becoming early readers

- Sessions to bring Childminders together in working time
- Collaboration of expertise in music and early years
- Encouraging interactive book reading

- Supporting early readers through the magic of story and music
- Links to early years evidence store
- Books and instruments to take away and use at home – to try out some new things
- Sowing the seeds for growth of childminder networks

- Value placed on sessions – interactive, new ideas
- Networks exclusively for Childminders received positively
- Children benefited



Why

How

What

Feedback

Blogs

Something I have learned...

"How to break up the words (and the pattern of the words - syllables)"

"That any story you can pick up and bring to life with music - continue with repetition"

Something I have already done...

"We extended our learning by going on a real train ride"

"I re-read the story with other children in my setting using the instruments and other instruments to re enact what we did at the group".

Something I now plan to do...

"Learn about other transport vehicles with the children"

"Do this more with other stories to engage the children more and enhance their concentration skills"

"Will get the animals out and follow the theme and add to areas of provision."

"Will definitely carry on with music activities-he loved being an elephant"

"Make a music bag"

"Try to engage with other childminders"

"Buy a whistle" (The Train Ride book)

