

HUB ACTIVITIES

2025-2026

Where connections flourish and practice evolves



Explore all
activities



Tap the live calendar links to explore and
book activities



Helping Early years practitioners to Apply
Research to Teaching and learning

SIGN UP

Newsletters and weekly
emails directly to your inbox

Follow, like, share



 Funded by
UK Government

September 2025 Edition







SEPTEMBER 2025

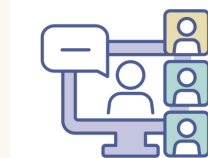


SUN	MON	TUE	WED	THU	FRI	SAT
31	01	02	03	04	05	06
07	08 Childminder Network (in person) [9:30am-11:30am]	09	10	11	12	13
14	15 Childminder Network (in person) [9:30am-11:30am]	16	17	18	19	20
21	22 Childminder Network (in person) [9:30am-11:30am]	23	24	25 Nurture Network Session 1 of 4 Transition and Learning 10am-12pm] OR [6pm-8pm]	26	27
28	29 Childminder Network (in person) [9:30am-11:30am] PD Network: Move to Thrive The 8 Sensory Systems with Helen Battelley [10am-11am]	30 Nutrition Essentials 9.30-11am SEND Network Golden Key Session 1 of 4 [1pm-3pm] OR [6pm-8pm]				



Our Networks

-  Leaders + Managers
-  Childminders
-  Nurture
-  Special Educational Needs + Disability [SEND]
-  Physical Development: Move to Thrive
-  Inspiration



Webinars

-  Topics aligned to current priorities

OCTOBER 2025



SUN

MON

TUE

WED

THU

FRI

SAT

30

01
Childminder Network
Nutrition Essentials

02
Boost your EYPP impact:
Resource to read ahead of
network meeting to be
available this month

03

04

05

06
Childminder Network
(in person)
[9:30am-11:30am]



07
SEND Network
Golden Key Session 2 of 4
[1pm-3pm] OR
[6pm-8pm]

08

09

10

11

12

13
Childminder Network
(in person)
[9:30am-11:30am]

14
SEND Network
Golden Key Session 3 of 4
[1pm-3pm] OR
[6pm-8pm]

15

16

17

18

19

20
Childminder Network
(in person)
[9:30am-11:30am]

21
SEND Network
Golden Key Session 4 of 4
[1pm-3pm] OR
[6pm-8pm]

22
Childminder Network
Navigating the new
Ofsted Framework

23

24

25

26

27

28

29

30

31



Our Networks



Leaders + Managers



Childminders



Nurture



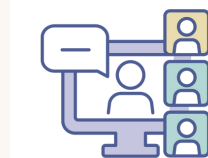
Special Educational
Needs + Disability [SEND]



Physical Development:
Move to Thrive



Inspiration



Webinars



Topics aligned to
current priorities







NOVEMBER 2025

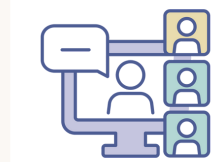


SUN	MON	TUE	WED	THU	FRI	SAT
				30	31	01
02	03 Childminder Network (in person) [9:30am-11:30am]	04	05	06 Leaders + Managers Network: Making Effective use of EYPP 9.30-11.00am OR 4.00-5.30pm	07	08
09	10 Childminder Network (in person) [9:30am-11:30am]	11	12	13	14	15
16	17 Childminder Network (in person) [9:30am-11:30am]	18	19	20	21	22
23	24 Childminder Network (in person) [9:30am-11:30am]	25 PD Network Move to Thrive Progressing to PE with Helen Battelley [10am-11am]	26	27 Nurture Network Session 2 of 4 Behaviour + Communication [10am-12pm] OR [6pm-8pm]	28	29
30						



Our Networks

-  Leaders + Managers
-  Childminders
-  Nurture
-  Special Educational Needs + Disability [SEND]
-  Physical Development: Move to Thrive
-  Inspiration



Webinars

-  Topics aligned to current priorities

DECEMBER 2025



SUN

MON

TUE

WED

THU

FRI

SAT

30

01
Childminder Network
 (in person)
 [9:30am-11:30am]

02
Inspiration Network
 with Julie Fisher
 Starting from the Child?
 [10am-11.30am]

03

04

05

06

07

08
Childminder Network
 (in person)
 [9:30am-11:30am]

09
PD Network Move to Thrive Baby Music +
 Sensory Play with
 Helen Battelley
 [10am-11am]

10

11

12

13

14

15

16

17

18

19

20

21

22

23

24

25

26

27

28

29

30

31



Our Networks

Leaders + Managers

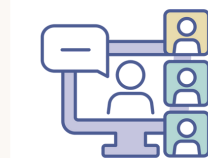
Childminders

Nurture

Special Educational Needs + Disability [SEND]

Physical Development: Move to Thrive

Inspiration



Webinars

Topics aligned to current priorities

JANUARY 2026



SUN

MON

TUE

WED

THU

FRI

SAT

30

31

01

02

03

04

05

06

07

08

09

10

11

12

13
Inspiration Network
 with Ruth Swailes
 Unique Child, Unique Curriculum [10am-11.30am]



14

15

16

17

18

19

20
Strengthening Supervision - what's important?
 10-11am

21

22

23

24

25

26

27

28

29
Nurture Network
 Session 3 of 4
Safe Spaces + Wellbeing
 [10am-12pm] OR
 [6pm-8pm]

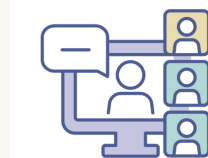
30

31



Our Networks

- Leaders + Managers
- Childminders
- Nurture
- Special Educational Needs + Disability [SEND]
- Physical Development: Move to Thrive
- Inspiration



Webinars

- Topics aligned to current priorities







FEBRUARY 2026

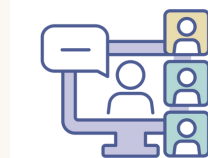


SUN	MON	TUE	WED	THU	FRI	SAT
01	02	03	04	05	06	07
08	09	10 Leaders + Managers Network Strengthening Supervision - what does in mean in practice?	11 Childminder Network Strengthening Supervision	12	13	14
15	16	17	18	19	20	21
22	23	24	25 Inspiration Network with Greg Bottrill 'Koselig - the Warmth of Time Together' [10am-11:30am]	26	27	28




Our Networks

-  Leaders + Managers
-  Childminders
-  Nurture
-  Special Educational Needs + Disability [SEND]
-  Physical Development: Move to Thrive
-  Inspiration



Webinars

-  Topics aligned to current priorities

MARCH 2026

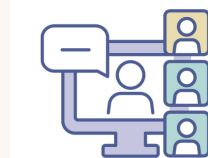


SUN	MON	TUE	WED	THU	FRI	SAT
01	02	03	04	05	06	07
08	09	10	11	12 Nurture Network Session 4 of 4 Embedding Practice [10am-12pm] OR [6pm - 8pm]	13	14
15	16	17	18	19	20	21
22	23	24	25	26	27	28
29	30	31				



Our Networks

- Leaders + Managers
- Childminders
- Nurture
- Special Educational Needs + Disability [SEND]
- Physical Development: Move to Thrive
- Inspiration



Webinars

- Topics aligned to current priorities

HUB ACTIVITIES

Where connections flourish and practice evolves

WATCH NOW



Explore our collection
of Short Sparks from
the HEART

'Short Sparks' sessions are quick, bite-sized learning opportunities that can be completed in under 45 minutes. Perfect for watching or listening to during your lunch break!

[Introduction to the Six Principles of Nurture](#)

[Getting Ready for Climate Action](#)

[Nurturing Staff Wellbeing](#)

[My home as a playground
.\[Childminders\]](#)

[Physical Development](#)

[The WellComm Toolkit](#)



Comments, compliments, questions or suggestions for future activities to meet your needs?

CONTACT US

SCAN ME

