

## The Great North Early Years Stronger Practice Hub

### November Newsletter and Key Dates for your Diary



## Welcome!

Our newsletter will cover how we can help you and your setting through evidence-informed practices. Click below to access the areas of interest.

**There are new dates for your diary so please ensure you check them out!**

*Please note, when you scroll to the bottom of this newsletter, the message might be clipped. Please press 'View entire message' to see the full newsletter.*

Recent Events

Dates For Your Diary

Blogs

DfE/EEF News

Other News

Bespoke Support

## Our Recent Events

### What a Month! November Highlights from the Stronger Practice Hub



November has been an incredibly active and impactful month for the Stronger Practice Hub! We are thrilled by the engagement across all our networks and events.

- A huge thank you to **Wingate Nursery** for hosting an inspiring network session focused on **meaningful maths**.
- **Sue Asquith** delivered a fantastic webinar, offering essential guidance for childminders on **supporting children's behaviour**.
- The **Fusion Learning team at Cleaswell Hill Specialist School** provided brilliant CPD on **anxiety-demand avoidance**—thank you for sharing your expertise!
- We saw great success with our open settings networks, hosted by the wonderful teams at **Shotley Bridge Infant School** and **West View Primary School**.
- A special thanks to **Bexhill Academy** for inviting us to their dedicated 2-year-old network.

#### Our Ongoing Successes:

- Our **online leadership, new to early years leadership, and online SEND networks** continue to grow and thrive.
- Our popular **childminder networks** with **Hartbeeps** and at **Brockbushes** were well-attended once again.
- Finally, we enjoyed connecting with practitioners at the **Northumberland and Durham childminder networks** and the **NEAT SEND conference**.

Thank you to everyone who participated and contributed to a successful month of shared learning!

## Dates for your Diary

Please see below for a range of **fully funded** CPD available to book. Unless stated otherwise, these sessions are open to all childminders and educators working in Early Years settings across the North East.

[See all our events](#)

Monday 1st December 3.45pm-5.45pm

Festive Forest School with a Twist with Goosehill Early Excellence at Croftway Academy, Blyth

[Learn more](#)

Tuesday 2nd December 1.00pm-4.00pm

AET CPD: Anxiety-Based Demand Avoidance at Croftway Academy, Blyth

[Learn more](#)

Thursday 4th December 9.30am-11.30am

Childminder Network at Brockbushes Play Barn

[Learn more](#)

Wednesday 14th January 3.30pm-5pm

Webinar - Unlock Early Writing Success: A Practical Approach with WISE Academies

[Learn more](#)

Thursday 15th January (Time TBC)

Autism Education Trust (AET) CPD: Developing Play in the Early Years (Venue TBC)

[Save the Date](#)

Monday 19th January

Pre-recorded webinar: Self-Regulation from Birth to 4 with Sue Asquith (*sign up to receive this on the above date*)

[Booking Link Coming Soon!](#)

Wednesday 21st January 8am-8.40am

Online Early Years Leaders Breakfast Briefing Network

[Learn more](#)

Thursday 22nd January 9.30am-11.30am

Childminder Network at Brockbushes Play Barn

[Learn more](#)

Wednesday 28th January 3.45-4.45pm

Online Early Years SEND Breakfast Briefing Network

[Learn more](#)

Wednesday 28th January 3.45-4.45pm

Online New/Inspiring Early Years Leaders Network

[Learn more](#)

Thursday 19th March 3.45pm-4.45pm

Webinar - 'Strive for Five: Enhancing Language Through Conversation' with Stella Jones from Town End Research School

[Learn more](#)

## Maths Champions

The National Day Nurseries Association (NDNA) are delighted to have secured funds to deliver the Maths Champions programme through the Education Endowment Foundation (EEF) and the Department for Education (DfE). The 12 month online programme has been evaluated by the EEF with York and Durham. We are proud to work alongside Town End Research School to raise the profile of using evidence-informed practice and research to strengthen Early Years settings and improve outcomes for children. University and has been proven to boost children's Maths and Language attainment by an average of 3 additional months. As part of this DfE-funded scaled delivery, the programme will be available at no cost to participating settings.



**Improve children's outcomes by three months through becoming a Maths Champion in your setting.**

**Express your interest here:**  
[www.bit.ly/GREATeoi](http://www.bit.ly/GREATeoi)



The Great North Early Years Stronger Practice Hub



You can express your interest today by completing our expression of interest form!

Express your Interest

### Childminder Network Sessions



These sessions are FREE for childminders and for children 0-5 years. They will give you the opportunity to network and build relationships with like minded individuals, whilst supporting the children to engage in fun & interactive singing and storytelling sessions with a highly trained and skilled Hartbeeps Imaginator.

We have organised a monthly childminder network in the following venues:

**Rising Sun Country Park, Benton**

January and March date and time is coming soon!

**Fawdon Family Hub, Newcastle**

January and March date and time is coming soon!

**Blyth South Beach HQ**

January and March date and time is coming soon!

**Lanchester Community Centre (10.00am-11.00am)**

Friday 30th January, Friday 10th February

Booking link coming soon!

**Spennymoor Community Centre (1.30pm-2.30pm)**

Wednesday 14th January, Wednesday 11th March

Booking link coming soon!

**Sherburn Community Centre (1.00pm-2.00pm)**

Wednesday 14th January, Wednesday 4th March

Booking link coming soon!

## Blogs

### Unlock Writing Success Part 1: The Important Role of Oral Composition



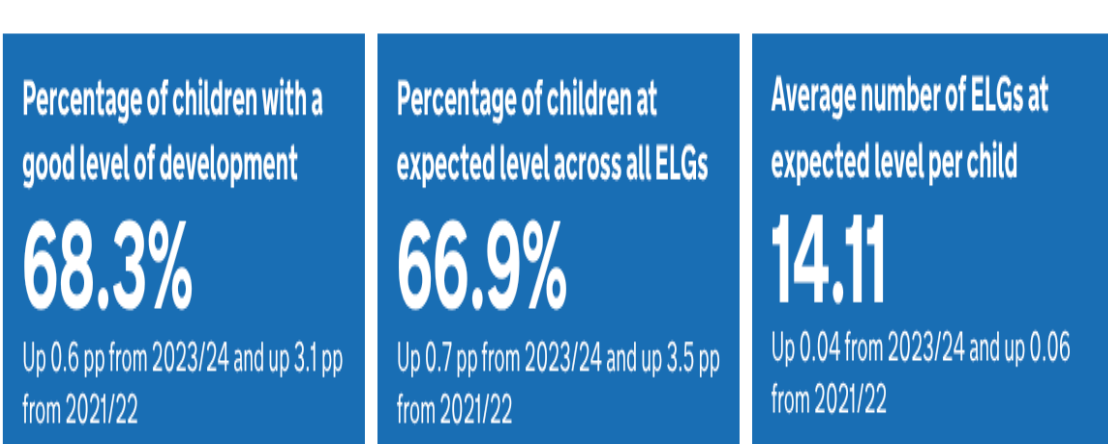
Ofsted states simply: "Language is the bedrock of thinking and learning. It should be a priority in the curriculum." Before a child can write a sentence, they must be able to say it. Oral composition—the process of saying aloud what they want to write—is repeatedly emphasised as the mechanism for developing this skill.

Read the Blog

## DfE/EEF News

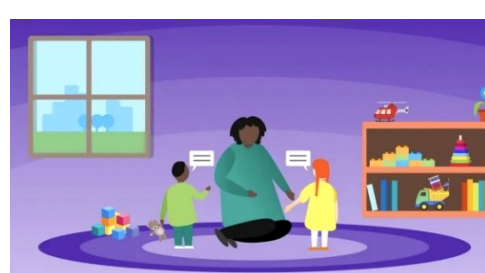
Academic year 2024/25

### Early years foundation stage profile results



On Thursday 27th November, the DfE released the Early Years Foundation Stage Profile Results. You can find out more [here](#).

### Making the Most of Early Years Pupil Premium: EEF Guidance for Settings



The Education Endowment Foundation (EEF) offers a powerful, evidence-based guide on how early years settings can use the Early Years Pupil Premium (EYPP) to significantly boost outcomes, especially for socio-economically disadvantaged children.

What's New & Why It Matters

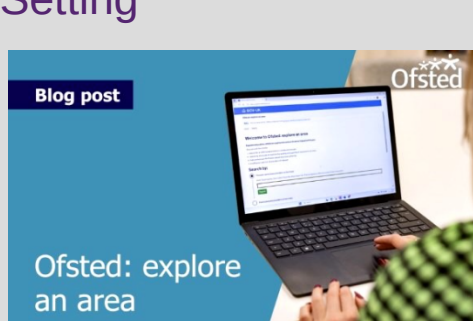
- In April 2025, the EYPP was increased by 45%, raising the funding to £570 per eligible child per year.
- This uplift presents a real opportunity to invest in practices that close the gap in early learning for children who need it most.
- EEF's new guide offers a "balanced approach" for spending EYPP: combining high-quality practice development, tailored support, and sustained leadership.

This free, step-by-step guide from the Education Endowment Foundation includes tips and advice on how you can use the funding to: improve the quality of your team's practice, tailor personalised support for children, and make changes last.

Explore the guide [here](#).

## Other News

### Understanding Your Local Context: How Ofsted's 'Explore an Area' Can Support Your Early Years Setting



Did you know that Ofsted has a powerful online tool called Explore an Area? This resource gives childcare leaders, practitioners, and parents a data-rich picture of local education provision — and it's especially useful for early years settings.

### What Is Explore an Area?

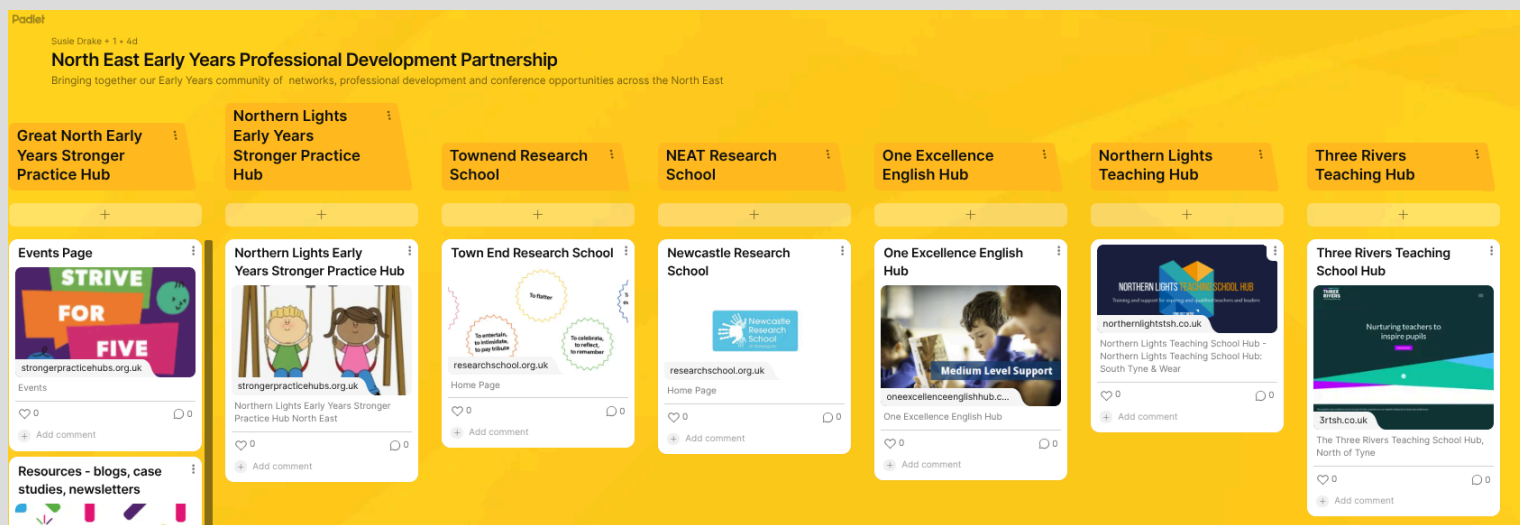
- It's an interactive map-based tool you can access through Ofsted.
- You can view data on registered childcare providers, including early years settings, local authority-wide statistics, and how your area compares nationally.
- The data includes indicators such as the number of early years providers, deprivation levels, proportions of children with special educational needs, and more.

### Why It Matters for Early Years Provision?

- **Informed Self-Evaluation:** Use the tool to understand the wider context in which your setting operates. What are the key social and economic factors in your local authority? How many young children live in your area? This kind of insight can strengthen your self-evaluation and help you articulate your setting's unique context.
- **Strategic Planning and Improvement:** By knowing how your local area performs on metrics like income deprivation (IDACI), early years uptake, or special educational needs, you can better prioritise resources, support, and outreach to families. The methodology behind the data is well- documented, so you can trust its use in planning.
- **Inspection Preparation:** Ofsted has stated that inspectors will use Explore an Area to understand the context of a provider during inspections. By familiarising yourself with the data, you can proactively reflect on local challenges in your planning call with inspectors. This helps ensure discussions around context are grounded in evidence.
- **Collaboration & Stakeholder Engagement:** The tool offers maps and visual overlays (e.g., income deprivation, number of children) that are great for presenting to staff, governors, or local partners. Sharing this data can help align everyone around shared priorities and local needs.

In the renewed inspection framework, context matters more than ever. Ofsted expects early years leaders to understand their communities — not just in qualitative terms, but backed by real, up-to- date data. Explore an Area is the same tool inspectors will be using, so when you use it yourself, you're speaking the same language. **Explore your area [here](#).**

## North East Early Years Partnership Padlet



Explore the **North East Early Years Professional Development Partnership Padlet** for a dynamic resource hub that compiles all the valuable materials and insights shared during our recent professional development showcase network. Explore the padlet [here](#).

## Bespoke Support

Empower your setting or school with our flexible and responsive bespoke support services! We understand that every setting has unique challenges and aspirations, which is why we offer tailored guidance precisely aligned with your individual needs. Whether you're preparing for a SEND Review, seeking to develop a robust Early Intervention Strategy, or aiming to enhance your Early Years provision through a comprehensive audit, our experienced team is dedicated to helping you achieve your specific goals.

Our bespoke support can be booked to address a range of specific requirements, including:

1. **Bespoke support for individual schools as per request:** Tailored solutions designed to address your unique challenges and priorities, drawing on the latest research evidence.
2. **Supported NASEN SEND review with an Early Years peer:** Collaborative review from an Early Years Practitioner who has completed the NASEN SEND Reviewer training. Supportive action planning drawing on EEF Early Years and SEND documentation.
3. **Early Intervention Strategy development:** Assistance in creating and implementing effective strategies to identify and support children with emerging needs. Map out the resources and training available in your locality to support children with SEND. This session draws on the advice from EEF SEND documentation.

Availability for our bespoke support is limited, and we are committed to prioritising settings and schools located in areas of disadvantage or those providing crucial support to vulnerable children. Don't miss this valuable opportunity to invest in your children's futures and cultivate a thriving learning environment. Contact us today to discuss your specific needs and secure your bespoke support package. Let us partner with you to make a meaningful and lasting impact.

[Request bespoke support](#)



We are proud to work alongside Town End Research School to raise the profile of using evidence-informed practice and research to strengthen Early Years settings and improve outcomes for children.

[Learn more about Town End Research School](#)

## Has this email been forwarded to you?

Sign up to our newsletter to get them automatically!

[Sign up](#)

## Follow us for more updates on social media!



You are receiving this email as you signed up for our newsletters.

[Want to change how you receive these emails?](#)

You can [Unsubscribe](#) or [Update your preferences](#)