

The Great North Early Years Stronger Practice Hub

June Newsletter and Key Dates for your Diary



Welcome!

Our newsletter will cover how we can help you and your setting through evidence-informed practices. Click below to access the areas of interest.

There are new dates for your diary so please ensure you check them out!

Please note, when you scroll to the bottom of this newsletter, the message might be clipped. Please press 'View entire message' to see the full newsletter.

Recent Events

Dates For Your Diary

Blogs

DfE/EEF News

Other News

Bespoke Support

Our Recent Events

June: A Month of Thriving Collaboration!

What an incredible June it's been for the Stronger Practice Hub! We're so grateful for the wealth of knowledge and insights shared throughout the month.

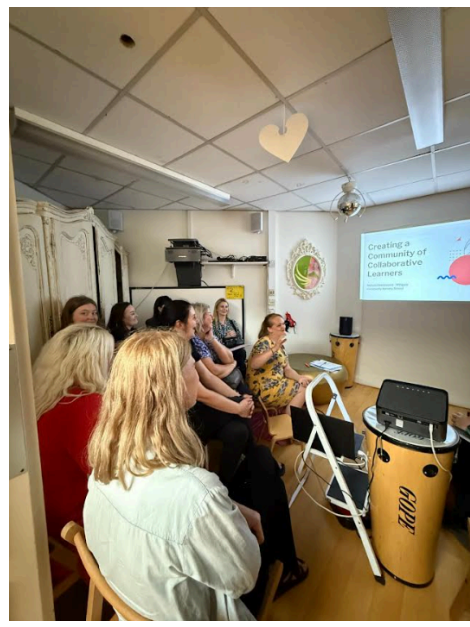
A huge thank you to **Sue Asquith** for her fantastic webinars on **school readiness** and **curriculum building**, providing invaluable guidance for practitioners. We also extend our gratitude to the **AET team from Cleaswell Specialist School** for a truly insightful 'Good Autism Practice' CPD session. And a special shout-out to **Susie Drake from our lead school, Haltwhistle Academy**, for delivering a fantastic **enabling environments webinar!**

Our networks were buzzing with innovative ideas. Thank you to the team at **Castle Kindergarten (Sacriston)** for hosting a wonderful session on the **power of focus stories and props**, and to the team at **Wingate Nursery** for a fantastic network discussion on **creating a community of collaborative learners**.

We were also thrilled to welcome **BBC Tiny Happy People** for a great webinar highlighting the fantastic resources their website offers. And a special thank you to **Hartbeeps** for continuing to deliver their fantastic **music and rhyme sessions** at our childminder networks.

Finally, a massive thank you to **everyone who attended our online childminder, leadership, and SEND networks** this month! Your engagement and participation are what make the Stronger Practice Hub a vibrant and supportive community.

We're already looking forward to what July brings!



Dates for your Diary

Please see below for a range of **fully funded** CPD available to book. Unless stated otherwise, these sessions are open to all childminders and educators working in Early Years settings across the North East.

[See all our events](#)

Thursday 3rd July 6.00pm-7.00pm

Summer Forest School Network: Share & Celebrate with Goosehill Early Excellence in Bothal Woods

[Learn more](#)

Tuesday 8th July 3.45pm-4.45pm

Webinar - Strive for Five: Enhancing Language through Conversations with Town End Research School

[Learn more](#)

Tuesday 8th July 4.00pm-6.00pm

Webinar - Safer Eating in the EYFS with Sue Asquith

[Learn more](#)

Tuesday 8th July 4.00pm-5.00pm

The Power of Adult Interactions Network at Hadrian Park Primary School

[Learn more](#)

Wednesday 9th July 8.00am-8.40am

Online Early Years Leaders Breakfast Briefing Network

[Learn more](#)

Thursday 10th July 9.30am-11.30am

Childminder Network at Brocksbushes Play Barn

[Learn more](#)

Friday 11th July 9.30am OR 12.30pm

Coastal School CPD: Inspiring Learning by the Sea with Houghton Community Nursery

[Learn more](#)

Monday 11th August 6.30pm-8.30pm

Webinar - Supporting Self Regulation in the Home Environment with Sue Asquith

[Learn more](#)

Wednesday 27th August 6pm-8.30pm

Webinar - Curriculum Building for 2-3 year olds with Sue Asquith

[Learn more](#)

Tues 23rd September 8.00am-8.40am

Online Early Years Leaders Breakfast Briefing Network

[Learn more](#)

Tuesday 30th September 8.00am-8.40am

Online Early Years SEND Breakfast Briefing Network

[Learn more](#)

Wednesday 8th October 7.00pm-8.00pm

Online BBC Tiny Happy People Champion Training

[Learn more](#)



These sessions are FREE for childminders and for children 0-5 years. They will give you the opportunity to network and build relationships with like minded individuals, whilst supporting the children to engage in fun & interactive singing and storytelling sessions with a highly trained and skilled Hartbeeps Imaginator.

We have organised a monthly childminder network in the following venues:

Rising Sun Country Park, Benton (9.30am-10.30am)

Thursday 3rd July

Click [here](#) to book.

Fawdon Community Family Hub, Newcastle (9.30am-10.30am)

Thursday 10th July

Click [here](#) to book.

Blyth South Beach HQ (10.15am-11.15am)

Tuesday 8th July

Click [here](#) to book.

Lanchester Community Centre (10.30am-11.30am)

Friday 18th July, Friday 19th September, Friday 3rd October, Friday 14th November

Click [here](#) to book.

Spennymoor Community Centre (1.30pm-2.30pm)

Wednesday 9th July, Wednesday 17th September

Click [here](#) to book.

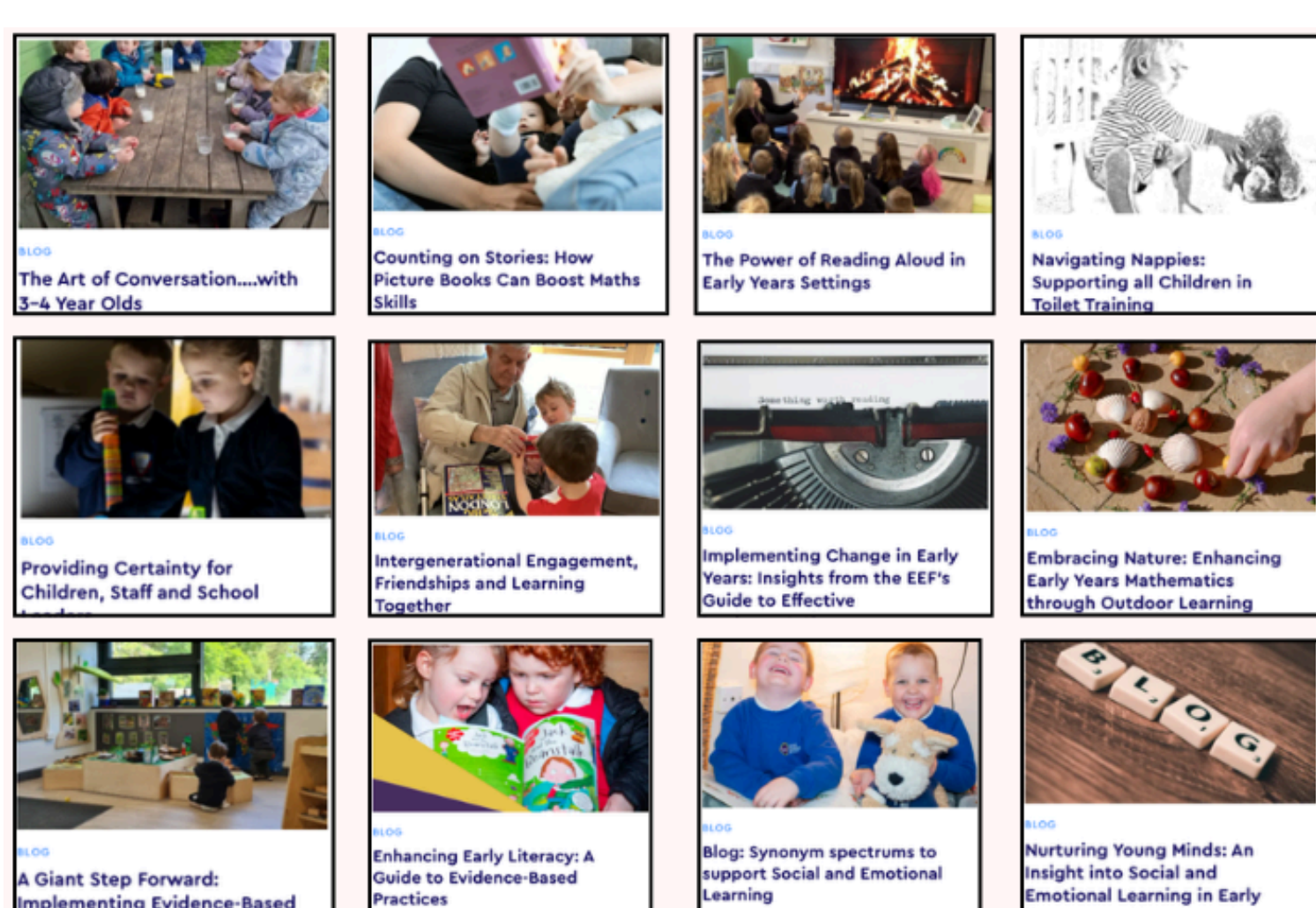
Sherburn Community Centre (1.00pm-2.00pm)

Wednesday 9th July, Wednesday 24th September

Click [here](#) to book.

Blogs

We have a range of blogs available to download on our website!



[Find the blogs!](#)

DfE/EEF News

This document sets out the planned changes to existing EYFS requirements (with new wording in blue) and where the changes will apply in the current childminder and group and school-based provider versions of the EYFS.

Please note - these changes will be implemented in September 2025.

Early Years Foundation Stage safeguarding reforms

Government consultation response

[Find out more](#)

Open consultation

Space requirements in early years childcare settings in England

From: [Department for Education](#)
Published 12 May 2025

[Have your say!](#)

Space Requirements Consultation

The DfE are seeking views on options for amending the indoor space requirements in the Early Years Foundation Stage (EYFS) statutory frameworks.

The consultation closes on 11th July.

Other News

Interaction Training Day for Educational Professionals

We're excited to share a training opportunity from our strategic partners at **Cleaswell Hill Specialist School...**

Bespoke Support

Empower your setting or school with our flexible and responsive bespoke support services! We understand that every setting has unique challenges and aspirations, which is why we offer tailored guidance precisely aligned with your individual needs. Whether you're preparing for a SEND Review, seeking to develop a robust Early Intervention Strategy, or aiming to enhance your Early Years provision through a comprehensive audit, our experienced team is dedicated to helping you achieve your specific goals.

Our bespoke support can be booked to address a range of specific requirements, including:

- Bespoke support for individual schools as per request:** Tailored solutions designed to address your unique challenges and priorities, drawing on the latest research evidence.
- Supported NASEN SEND review with an Early Years peer:** Collaborative review from an Early Years Practitioner who has completed the NASEN SEND Reviewer training. Supportive action planning drawing on EEF Early Years and SEND documentation.
- Early Intervention Strategy development:** Assistance in creating and implementing effective strategies to identify and support children with emerging needs. Map out the resources and training available in your locality to support children with SEND. This session draws on the advice from EEF SEND documentation.

Availability for our bespoke support is limited, and we are committed to prioritising settings and schools located in areas of disadvantage or those providing crucial support to vulnerable children. Don't miss this valuable opportunity to invest in your children's futures and cultivate a thriving learning environment. Contact us today to discuss your specific needs and secure your bespoke support package. Let us partner with you to make a meaningful and lasting impact.

[Request bespoke support](#)



We are proud to work alongside Town End Research School to raise the profile of using evidence-informed practice and research to strengthen Early Years settings and improve outcomes for children.

[Learn more about Town End Research School](#)

Has this email been forwarded to you?

Sign up to our newsletter to get them automatically!

[Sign up](#)

Follow us for more updates on social media!



Facebook Twitter LinkedIn Instagram Email

You are receiving this email as you signed up for our newsletters.

Want to change how you receive these emails?

You can [Unsubscribe](#) or [Update your preferences](#)

Add content for your email template in this text block.