

The Great North Early Years Stronger Practice Hub

April Newsletter and Key Dates for your Diary



Welcome!

Our newsletter will cover how we can help you and your setting through evidence-informed practices. Click below to access the areas of interest.

There are new dates for your diary so please ensure you check them out!

Please note, when you scroll to the bottom of this newsletter, the message might be clipped. Please press 'View entire message' to see the full newsletter.

Competition Winner

Recent Events

Dates For Your Diary

Blogs

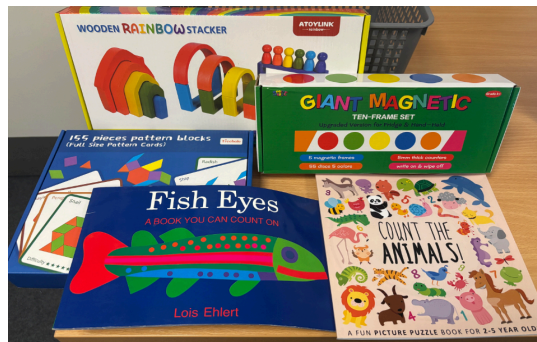
DfE/EEF News

Other News

Competition Winner

Extension of the Early Years Stronger Practice Hub Programme Competition

We have a winner! A massive congratulations to Debbie Lewis at Bexhill Academy in Sunderland, who won our Hub extension prize draw. But the good news doesn't stop there! We're giving everyone another shot at winning a fantastic hamper of evidence-informed goodies. Just complete our short survey – your feedback helps us plan great future events!



Enter our prize draw

Our Recent Events

Catch up on our busy April CPD!

- We're grateful to Goosehill Early Excellence for leading insightful network sessions on sensory needs at Amberley Primary School and a spring/Easter gathering at Bothal Woods.
- Our childminder network at Brocksbushes was a hit, with more dates coming soon.
- We were also pleased to connect with the Durham childminder network and the Northumberland early years networks to discuss Early Years Pupil Premium guidance.
- Many thanks to nasen for their informative SEND reviewer training webinar and to Speech and Language UK for a fantastic introduction to early years speech and language.
- Plus, our ongoing networking sessions with the Hartbeeps team continue to be a valuable resource (see below for new dates).



Dates for your Diary

Please see below for a range of fully funded CPD available to book.

Unless stated otherwise, these sessions are open to all childminders and educators working in Early Years settings across the North East.

See all our events

Tuesday 6th May 3.30pm-5.00pm

Speech and Language UK Webinar - Songs, Rhymes and Rhyming Books: why we do it and why it matters

Learn more

Wednesday 7th May 8.00am-8.40am

Online Early Years Leaders Breakfast Briefing Network

Learn more

Wednesday 7th May 6.00pm-8.30pm

Speech and Language UK Webinar - Speech and Language Challenges in Early Years: Identifying Needs and Supporting Children and their Families

Learn more

Wednesday 7th May 7.00pm-8.00pm

Online BBC Tiny Happy People Champion Training

Learn more

Saturday 10th May 9.00am-11.00am

Online NASEN Early Years SEND Reviewer Training

Learn more

Monday 12th May 4.00pm-5.15pm

Building a Happy Brain in Babies with Goosehill Early Excellence at Croftway Academy, Blyth

Learn more

Tuesday 13th May 7.00pm-7.45pm

Online Early Years Childminders' Network

Learn more

Tuesday 20th May 5.00pm-7.30pm

Webinar: Curriculum Building for 3-4 year olds with Sue Asquith

Learn more

Wednesday 21st May 8.00am-8.40am

Online Early Years SEND Breakfast Briefing Network

Learn more

Wednesday 21st May 6.00pm-8.30pm

Speech and Language UK Webinar - Supporting and Understanding the Needs of Children with Complex Speech and Language Challenges

Learn more

Thursday 22nd May 6.30pm-7.30pm

Wednesday 18th June 4.00pm-5.00pm

Networking session at Castle Kindergarten,

Hlyton Castle

[Learn more](#)

Online BBC Tiny Happy People Champion

Training

[Learn more](#)

Tuesday 8th July 3.45pm-4.45pm

Webinar - Strive for Five: Enhancing Language through Conversations with Town End Research School

[Learn more](#)

Childminder Network Sessions



These sessions are FREE for childminders and for children 0-5 years. They will give you the opportunity to network and build relationships with like minded individuals, whilst supporting the children to engage in fun & interactive singing and storytelling sessions with a highly trained and skilled Hartbeeps Imaginator.

We have organised a monthly childminder network in the following venues:

Rising Sun Country Park, Benton (9.30am-10.30am)

Thursday 8th May, Thursday 5th June, Thursday 3rd July

Click [here](#) to book.

Blyth South Beach HQ (10.15am-11.15am)

Tuesday 20th May, Tuesday 17th June, Tuesday 8th July

Click [here](#) to book.

Morpeth Chantry Play Hub (10.45am-11.45am)

Tuesday 13th May, Tuesday 10th June

Click [here](#) to book.

Lanchester Community Centre (10.30am-11.30am)

Friday 9th May, Friday 20th June, Friday 11th July

Click [here](#) to book.

Spennymoor Community Centre (1.30pm-2.30pm)

Wednesday 14th May, Wednesday 11th June

Click [here](#) to book.

Sherburn Community Centre (1.00pm-2.00pm)

Wednesday 21st May, Wednesday 18th June

Click [here](#) to book.

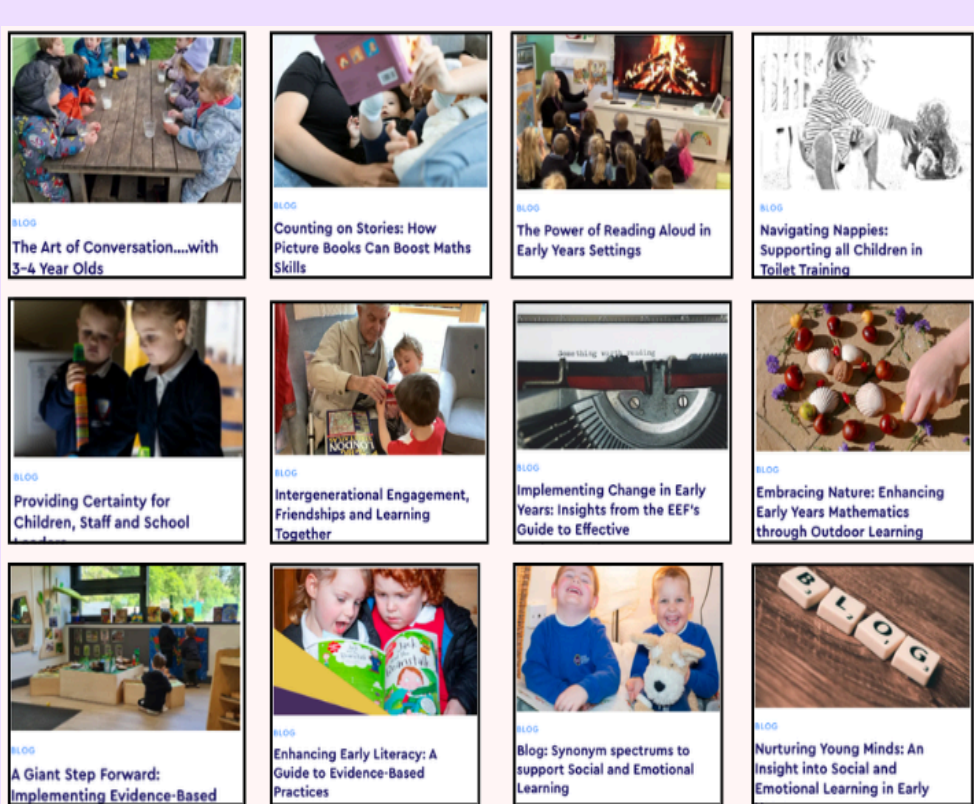
Bishop Auckland Methodist Church (1.30pm-2.30pm)

Monday 19th May, Monday 16th June

Click [here](#) to book.

Blogs

We have a range of blogs available on our website!



[Find the blogs!](#)

DfE/EEF News

Early Years Foundation Stage (EYFS) Nutrition Guidance Changes from September 2025



Early Years Foundation Stage nutrition guidance

Guidance for group and school-based providers and childminders in England

April 2025

This guidance is for early years providers in England who are caring for early years children aged 0 to 5 years.

It supports providers in meeting the Early Years Foundation Stage (EYFS) statutory framework requirement 'Where children are provided with meals, snacks and drinks, these must be healthy, balanced and nutritious'.

From September 2025, the EYFS statutory framework will include a safeguarding and welfare requirement that asks providers to follow this nutrition guidance unless there is good reason not to.

[Explore now](#)

New Additions to the EEF Evidence Store



New to the EEF Early Years Evidence Store: Interactive Writing and Self-Care! The Education Endowment Foundation has recently added two important approaches to their evidence-based resources. Discover how interactive writing can boost early literacy skills and how fostering self-care routines supports children's wellbeing, health, and safety.

[Explore now](#)

Other News

Conference Opportunity: Newcastle Local Authority Invites North East Practitioners. Spaces are now available for Newcastle LA's exciting and inspiring conference. See the flyer below for details:

Newcastle Early Years Conference 2025

23rd June 2025
9.15- 16.15

Location
The Grand Hotel
Gosforth Park
NE3 5HN

Bookings Via:
SERVICES To SCHOOLS
Early Bird Rate £120 if Booked by
March 31st.
Then £150: Newcastle LA &
£180: Out of LA
<https://servicestoschools.org.uk/Event/254658>



KEY NOTE SPEAKER DR ALISTAIR BRYCE CLEGG

Workshops:



DR AMY PEARSON :
AUTISM MYTH BUSTING



**NEWCASTLE SEMH TEAM &
KEY NOTE FROM
SARAH WOODBURN**



CLAIRE TUSTIN:
USING MUSIC
EFFECTIVELY IN THE
EARLY YEARS



INSPIRING FOUNDATIONS:
CURRICULUM DESIGN
PROGRESSION &
INSPIRING
ENVIRONMENTS



CHILDSPLAY NURSERY
CONNECTING TO NATURE

About the Event:

Hear from the highly respected educator, author, and consultant Dr. Alistair Bryce-Clegg, specializing in early childhood education. With decades of experience in teaching and leadership and a Doctorate in Education, he has become a leading advocate for innovative and child-centered approaches to learning. Dr. Bryce-Clegg is well-known for his practical, research-informed strategies that foster creativity, curiosity, and independence in young learners

[Book now](#)



We are proud to work alongside Town End Research School to raise the profile of using evidence-informed practice and research to strengthen Early Years settings and improve outcomes for children.

[Learn more about Town End Research School](#)

Has this email been forwarded to you?

Sign up to our newsletter to get them automatically!

[Sign up](#)

Follow us for more updates on social media!



You are receiving this email as you signed up for our newsletters.

Want to change how you receive these emails?

You can [Unsubscribe](#) or [Update your preferences](#)

Add content for your email template in this text block.